

WELCOME TO THE MULTIVERSE!

-The Lore Archive-





The Red Star:
"EREVOS-901"

Every Universe's Gateway
is connected to
The Core !

THE MULTIVERSAL CORE

"The Balance" monitors
the MultiVersal Channel and
Gateways

Can only be triggered
directly in space, not
through gateways

The Prime
Anchor

start of timeline

Kiro accidentally
trigger the red star

"The Glitch"



0-OmniVerse



1-Erevos-901
Verse

(interstellar
intelligence)



2-Paradox-Verse
(debug duel)

alternative
ending



5-PhantomVerse
(competitive
programming)



4-PixelVerse
(design dash)



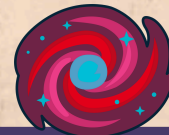
3-DataVerse
(query quest)



6-InfraVerse
(web forces)



7-CodeVerse
(code sprint)



8-ObsidiVerse
(incognito
investigation)



∞.AntiVerse

The Antogonist



9-ShadowVerse
(capture the flag)

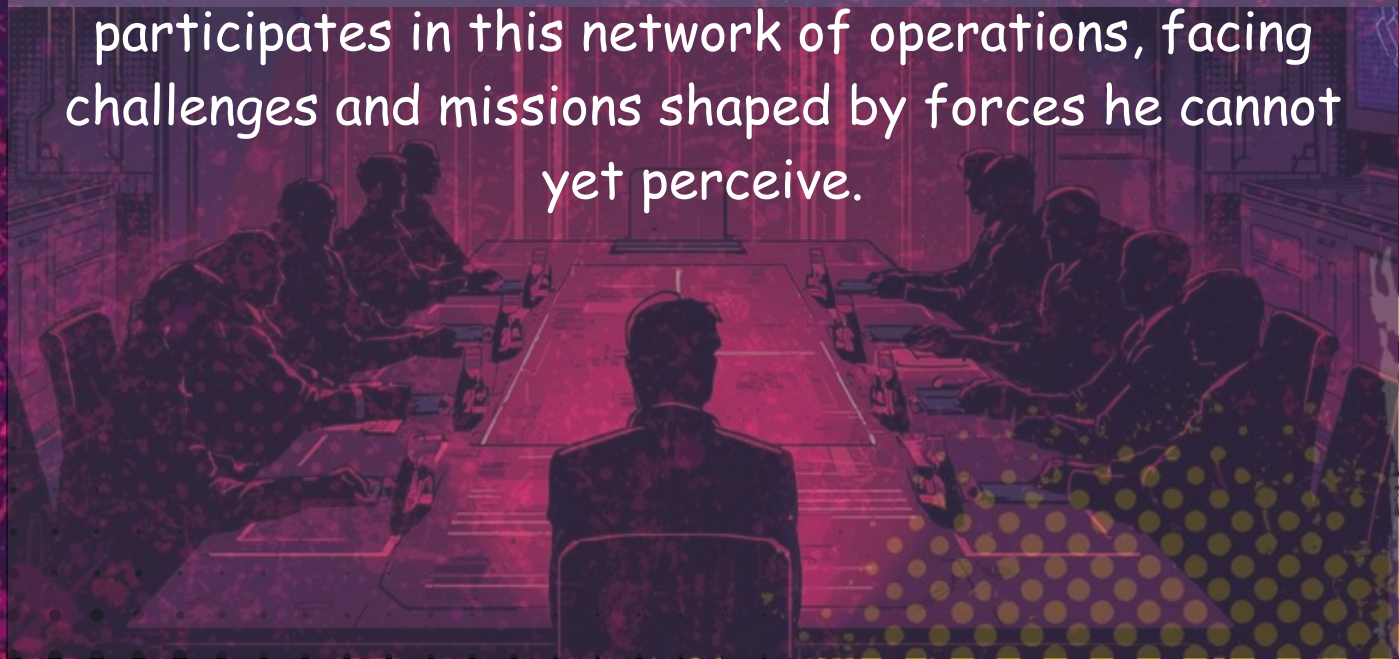
end of timeline

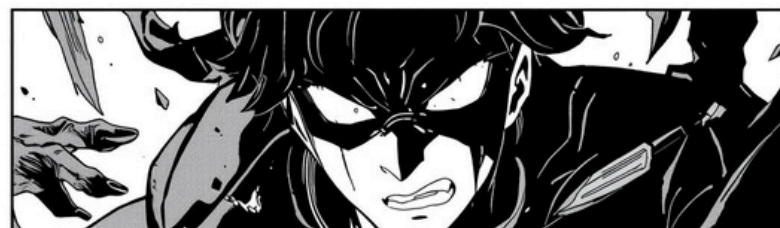
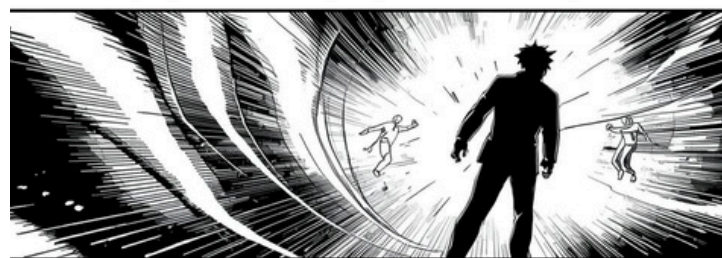
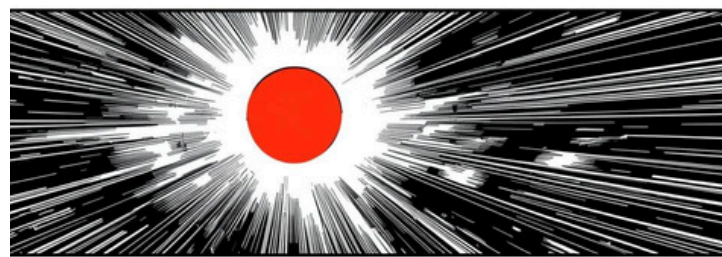
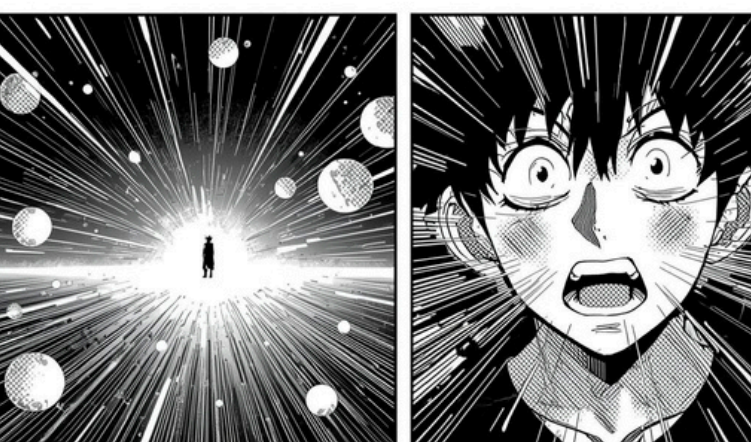
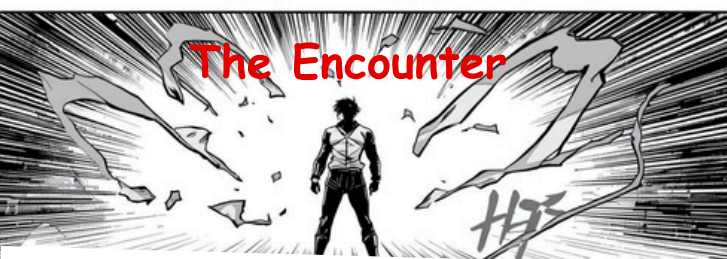
“The Balance”

Future: The Incognito Board

“The Balance”, first established in Erevos-901 by AntiVerse Kiro, spreads across every universe as “The Incognito Board”. Its members, unknowingly influenced by AntiVerse Kiro, manage gateways connecting every universe to the core.

While the organization’s public objectives vary in each universe, its hidden purpose is singular: to *control the multiversal channel*. Unwittingly, Kiro participates in this network of operations, facing challenges and missions shaped by forces he cannot yet perceive.



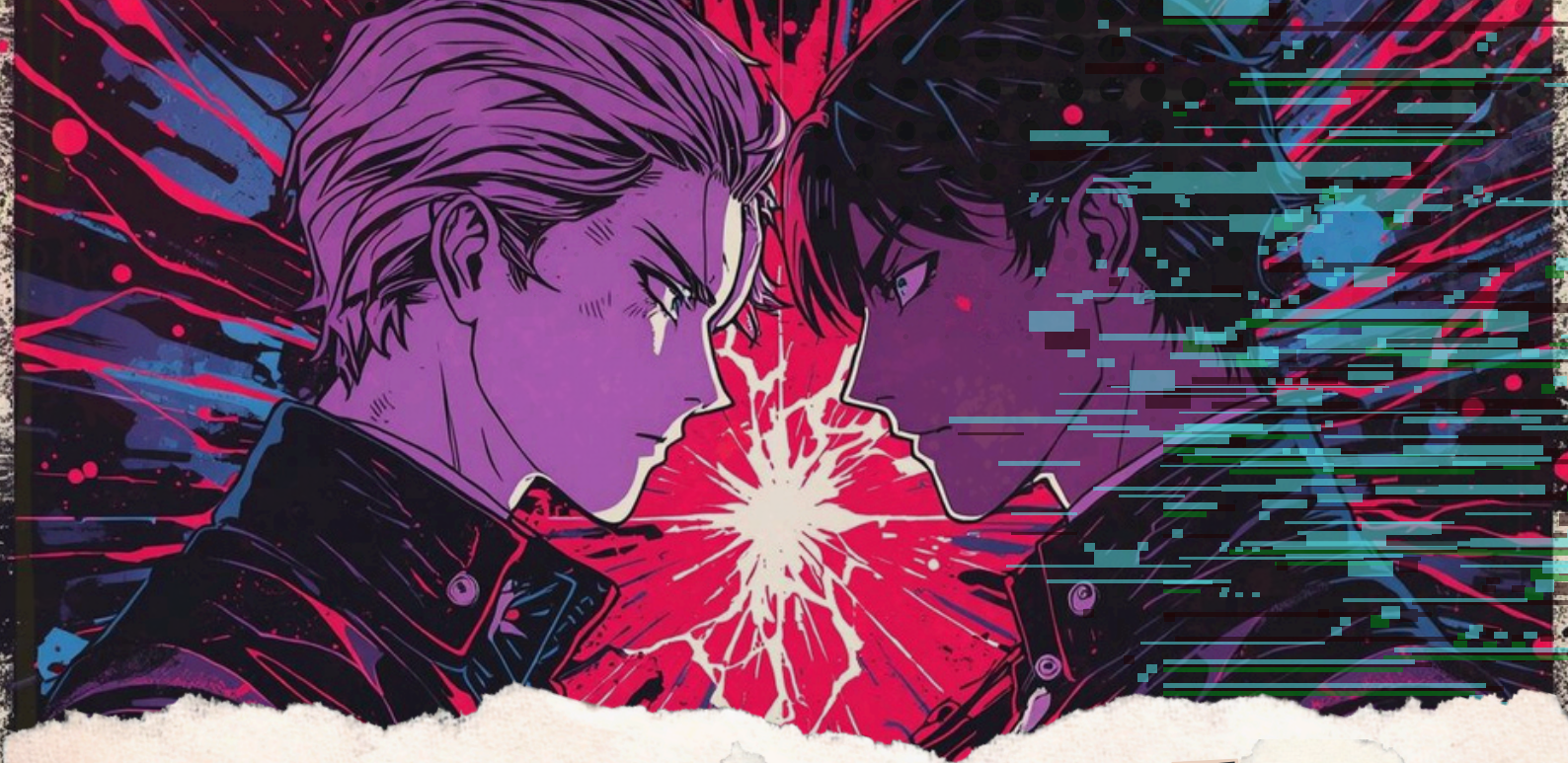


The MultiVersal Lore

Kiro Veyron, the main character, begins his journey in Erevos-901 Verse, sent on a mission by the enigmatic organization known as The Balance (called The Incognito Board in all other universes). Tasked with collecting critical data from a distant planet to save humanity, Kiro ventures through the swirling energies of Erevos-901, unaware that destiny has other plans.

While navigating the core, Kiro accidentally triggers the Red Star, a source of immense power, and is suddenly transported to the Paradox-Verse. Here, The Glitch occurs - the multiverse's law that forbids two versions of the same person from existing in a single universe is violated. Time and space shatter around him, creating ripples that destabilize all other realities and set the stage for chaos across the multiverse.





OmniVerse - Kiro Veyron **“The Prime Anchor”**

He carries the Prime Frequency, the fundamental signal that keeps the multiverse synchronized. His gateway is unique: it can shut down every other gateway across every universe.

Because of this, OmniVerse Kiro is the only being truly immune to external control, influence, or voice manipulation of AntiVerse Kiro.

He is not a warrior or villain - he is the living stabilizer of existence, the consciousness that prevents reality from tearing itself apart.



AntiVerse - Kiro Veyron **“The Architect of Control”**

He is not only merely corrupted; he is calculating, hyper-logical, digital, and ruthless about equilibrium. Where others see lives and emotions, he sees systems, errors, and variables that must be corrected.

Unable to physically enter other universes without causing catastrophic Glitches, AntiVerse Kiro learned to operate indirectly. He influences minds, nudges organizations, and bends history not through brute force, but through subtle psychological control. He created the Incognito Board/The Balance as tools to work on his behalf. His goal is not destruction. His goal is perfect enforced “balance”, even if it means tragedy and canon events. To him, pain is simply a necessary adjustment.

Project Infinity Echo : *"The Multiversal Engine"*

Project Infinity Echo is AntiVerse Kiro's grand design.

Its purpose is to:

- synchronize all universes
- stabilize the multiversal core
- maintain AntiVerse Kiro's influence everywhere

To power it, he used OmniVerse Kiro's quantum signature - the Prime Anchor's unique existence as the master frequency for all gateways. Without knowing it, OmniVerse Kiro became the living key that allowed every gateway to function.



Quantum Signature - *"The Living Key"*

A quantum signature is not a code or password. It is:

- every decision Kiro has ever made
- every branching path
- every timeline he anchors
- every version of himself across universes

It is the mathematical fingerprint of his existence.

AntiVerse Kiro stole this signature and wired it into Project Infinity Echo turning OmniVerse Kiro into the foundation of the multiverse.

The MultiVersal Lore

When Erevos-901 Verse Kiro finally reaches the Paradox-Verse - the truth is revealed to him. He learns that somewhere beyond all universes exists OmniVerse Kiro, the "Prime Anchor" - the one being whose frequency underpins reality itself. Only the Prime Anchor can end AntiVerse Kiro's hidden control and shut down the gateways that bleed across dimensions.

Realizing what is at stake, Erevos-901 Kiro reaches out across space and time, sending the message to OmniVerse Kiro: Close the gateways or the multiverse will fracture..

And OmniVerse Kiro hears him.

One by one, gateways across realities begin to dim and fold shut. Each closure sends a shockwave through existence — timelines rewind, paradoxes unravel, broken destinies knit themselves together. The chaos born from every Glitch begins to settle, like a storm finally deciding to end.

As the last gateway falls silent, OmniVerse Kiro awakens fully. He sees everything at once - every universe (the timeline), every canon event, every version of himself pushed toward a path he did not choose.

This moment becomes his canon event.

By the time the last gateway closes, the Multiversal Reset is complete. Reality stabilizes. AntiVerse Kiro's attempt to impose his own "balance" is halted.

And the multiverse, for the first time, finally breathes.

What is Canon Event?

A **Canon Event** is an unavoidable point in the timeline, a tragedy or irreversible shift that permanently shapes a universe and its version of Kiro.

How Canon Event was created?

Canon Event was a consequence of AntiVerse Kiro triggering the Red Star to control the multiversal gateways. His manipulations force reality to rebalance, creating irreversible tragedies and timeline shifts.

- Every universe experiences them except OmniVerse Kiro.
- OmniVerse Kiro only experiences them if he performs **The Multiversal Reset**.
- Canon Events are the price of AntiVerse Kiro's enforced balance.

OmniVerse



**MultiVersal
Reset**

Erevos-901 Verse



"The Glitch"

Paradox-Verse



"The Revelation"

DataVerse



**"The Global
Normalization"**

DesignVerse



**"The Phantom
Fabrication"**

PhantomVerse



**"The Mirror
Solidification"**

InfraVerse



**"The Great
Deletion"**

CodeVerse



**"The Logic
Lock-In"**

ObsidiVerse



**~~"The Obsidian
Secret"~~**

ShadowVerse



**"The Static
Freeze"**

"The Murder"

AntiVerse



????

Your Role in The MultiVerse

As you enter each competition, you will play as a different version of **Kiro Veyron** from that universe.

Each world has its own trials, mysteries, and stakes: from Erevos-901's cosmic missions, to Paradox-Verse's shattered timelines, to the hidden challenges of DataVerse, PixelVerse, and beyond.

Every decision shapes reality. Every Kiro is you. The multiverse awaits and the story is in your hands.